

# Contents

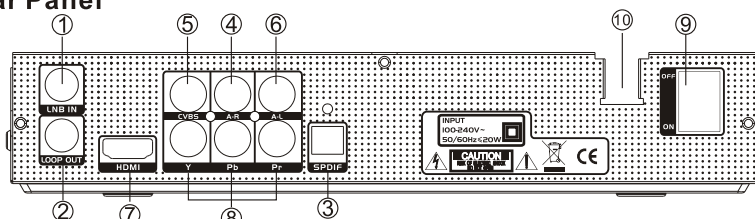
<b>Front Panel</b> .....	1
<b>Rear Panel</b> .....	1
<b>Remote Control Unit</b> .....	2
<b>STB Connection</b> .....	3
<b>Channel Search</b> .....	4
1. Search one Satellite .....	4
2. Search one TP .....	5
3. Blind Scan .....	7
<b>Basic Operation</b> .....	8
1. Information .....	8
2. Changing Channels .....	8
3. Service List .....	8
4. Volume Control /Mute .....	9
5. Soundtrack .....	9
6. Subtitle .....	9
7. Teletext .....	10
8. Program Guide .....	10
9. Timer Overview .....	11
10. Time-Shift .....	13
11. PVR .....	14
12. USB .....	14
13. Favorite Channels List .....	17
14. Satellite Group .....	17
<b>Main Menu</b> .....	18
<b>1. Installation</b> .....	18
1.1 Manual Installation .....	18
1.2 Blind Scan .....	18
1.3 Installation Dish .....	18
<b>2. Channels</b> .....	19
2.1 Organize Services .....	19
2.2 Organize Favorites .....	23
2.3 Factory Reset .....	24
2.4 Delete all Data .....	24
<b>3. Personalization</b> .....	25
<b>4. Preference</b> .....	25
4.1 Language .....	26
4.2 Parental control .....	26
4.3 Time Setting .....	26
4.4 Video Control .....	28
<b>5. Extra</b> .....	28
5.1 CA Status .....	28
5.2 Email .....	30
5.3 System Information .....	31
5.4 Calendar .....	31
5.5 Games .....	31
5.6 Software Upgrade .....	32
5.7 Converter .....	32
<b>TROUBLESHOOTING</b> .....	33
<b>Technical Specifications</b> .....	34

## Front Panel



1. MENU  
To display the main menu on the screen or return to the previous menu .
2. OK  
To confirm the menu you choose or enter the item you selected.
3. CH▲▼  
To change channels up / down.  
To move up or down highlight bar cursor for selecting options on the menu.
4. VOL ◀▶  
To increase or decrease the volume levels.
5. STANDBY  
Switch between operation and standby mode.
6. LED INDICATOR  
Indicate STB working status.
7. USB  
For software upgrade and PVR.
8. SMART CARD SLOT  
Input the smart card into this slot.

## Rear Panel



- (1) **【LNB IN】** Connect this port to a terrestrial antenna via coaxial cable.
- (2) **【LOOP OUT】** It is for connection of another STB to your STB.
- (3) **【SPDIF】** Output for connection via SPDIF.
- (4) **【A-R】**(Audio Right)Connect this port to the corresponding audio (R) signal input port of TV or VCR or Hi-Fi audio system.
- (5) **【CVBS】**(Video) Connect this port to the corresponding video signal input port of TV or VCR.
- (6) **【A-L】**(Audio Left)Connect this port to the corresponding audio (L) signal input port of TV or VCR or Hi-Fi audio system.
- (7) **【HDMI】** Connect this port to HDMI Interface.
- (8) **【YPbPr】** Connect this port to TV via HDMI cable.
- (9) **【ON / OFF】** Power on / switch off .
- (10) **【100V-240V 50/60Hz】** Connect to 100V-240V voltage 50Hz range AC power.

## Remote Control Unit



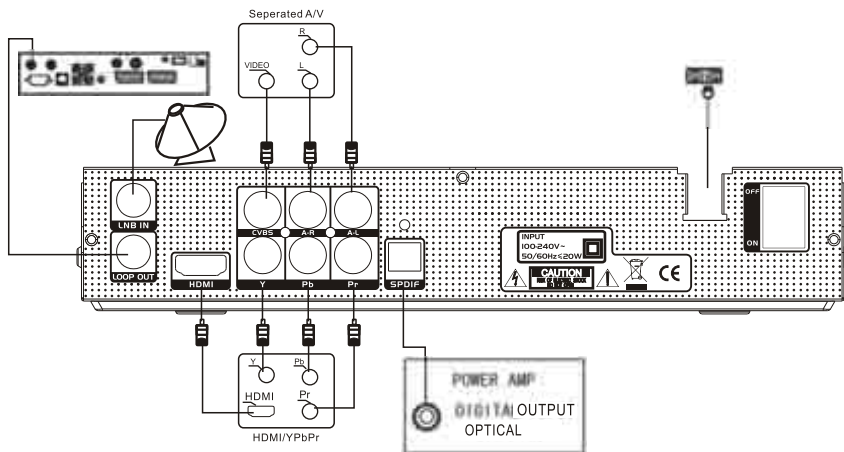
KEY	FUNCTION
	To turn your STB on/off. (standby)
MUTE	To temporarily cut off the sound
0-9	Used to select the channel and enter the channel information and PIN Code.
RECALL	To play previous service
MENU	To display the main menu on the screen or return to the previous menu.
EXIT	To exit the menu or the screen
OK	To confirm the menu you chose or enter the item you selected.
PAGE UP/ PAGE DOWN	Turn page forward or backward
VOL UP/ VOLDOWN	To increase or decrease volume levels.
▲ ▼	To change channels up / down. To move up or down highlight bar cursor for selecting options on the menus.
◀ ▶	To increase or decrease volume levels.
EPG	To display the TV/RADIO program guide.
FAV	Go to favorite channels list.
INFO	To display the program information on the screen
AUDIO	To select Audio output type (L,R,STEREO)
SUB	To select the subtitle / teletext Language list for the current Channel.
TXT	Teletext Key
PAUSE	To temporarily pause the video.
PIG	Picture in Graphic.
TV/RADIO	To switch between TV program and RADIO only receiving mode.
PLAY	Play the record.
REC	To start record
STOP	Stop the recording or playing.
APPL	Go to Playback, MP3 or Picture file lists on the disk
FF	Fast forward, to move forward in the playback.
REW	Rewind, to review a portion of the record.
Other	Reservation
SAT	Go to satellite channels list (only show satellites in which there were programs).
COLOR BUTTON	Corresponds to a special function according to tips in specific pages

For your reference only, actual products may vary from picture.

# STB Connection

## How to connect your STB to various systems?

There are several ways of connecting the STB to your TV and/or Hi-Fi SYSTEM. Consult your local supplier for assistance in setting-up your system best suited to your requirements.



### 1. Connect the signal line to STB

Before searching channels, you should connect the signal line to the port of **LNB IN** on your STB.

### 2. Connect STB to a TV set

For watching TV programs, you should connect your STB to a TV set. There are three 3 kinds of video interfaces for your choice.

#### ◆ AV Interface

You can use an AV cable (Video Jack) to connect the ports of (**CVBS + A-L + A-R**) on your STB, according the corresponding line colors.

#### ◆ YPbPr Interface

You can use a YPbPr cable to connect the ports of (**Y + Pb +Pr**) on your STB, according the corresponding line colors.

#### ◆ HDMI Interface

You can use a HDMI cable to connect the port of **HDMI** on your STB.

### 3. Turn on the power and search channels

For watching TV programs, you should search channels firstly.

For detail, refer to the chapter of **Channel Search**.

### 4. Connect STB to a HI-Fi System (Optional)

Connect a RCA stereo cable from the **AUDIO L/R** jacks on your STB to the **LINE, AUX, SPARE** or **EXTRA** input jacks on your Hi-Fi System.

**Or** connect a optical fiber cable from **SPDIF** on your STB to the digital input port on your Hi-Fi System.

### 5. Loop Through (Optional)

If you have another analogue or digital STB and you wish to use the same LNB then you can connect it via the loop through. Connect one end of coaxial cable to the **LOOP OUT** on the STB and connect the other end to the **LNB IN** on your second STB.

## Channel Search

After connect the STB to all peripheral devices and turn on the power of your STB and other devices, you can begin to search the channels. There are three ways to search the channels: **Search one Satellite**, **Blind Scan** and **Search one TP**.

If the **Parental Lock** is **ON**, you need to input your PIN when you enter **Installation**, refer to **Parental Control**.

### NOTE:

**In this area we use this satellite data to receive programmes:**

**Satellite:Asiasat 4 ku.**

**Angle of the dish-290 degrees.**

**Frequency-12360/12361.**

**Symbol rate-9404.**

**Polarisation-vertical.**

### 1. Search one Satellite

You can automatically search all channels prefabricated in the STB.

- ◆ Press the MENU button on the Remote Control Unit into the **Main Menu**.
- ◆ Press the ▲▼ buttons to select the **Installation** item, then press the **OK** or ► button to enter the sub-menu.
- ◆ Press the ▲▼ buttons to select **Manual Installation**, then press the **OK** or ► button to enter the menu **Manual Installation**.
- ◆ Press the ▲▼ buttons to select a satellite
- ◆ Press the **RED** button, the STB will automatically search all Tps in the Satellite and save channels into Channel List.

It takes several minutes to search the channels. When finish searching, you can press OK button to return **Main Menu**.





## 2. Search one TP

You can also manually search channels.

- ◆ Press the MENU button on the Remote Control Unit to enter the **Main Menu**.
- ◆ Press the ▲▼ buttons to select the **Installation** item, then press the OK or ► button to enter the sub-menu.
- ◆ Press the ▲▼ buttons to select **Manual Installation**, then press the OK or ► button to enter the menu **Manual Installation**.



- a. Press the ▲▼ buttons to select a satellite
- b. Press the green button. It will show the **Satellite Parameters** menu. There are some parameters in this menu, you can rename the satellite, set DisEq, set the motor and so on.





c. Press the yellow button. It will show the TP list of the satellite selected. You can add, edit or delete TP and scan a TP appointed.



d. Press the red button. It will show the Scan Option menu. There are some options in this menu, you can press the ▲▼ button to select a option and then press the ◀▶ button to change its content/value . And then press the OK button, the STB will begin to search channels in all Tps of the satellite selected. It takes several minutes to search the channels. When finish searching, you can press the OK button to return **Main Menu**.



### 3. Blind Scan

You can also use a Blind Scan to search new Tps .

- ◆ Press the MENU button on the Remote Control Unit to enter the **Main Menu**.
- ◆ Press the ▲▼ buttons to select the **Installation** item, then press the OK or ► button to enter the sub-menu.
- ◆ Press the ▲▼ buttons to select **Blind Scan** , then press the OK or ► button to enter the menu **Blind Scan** .



Choose a satellite to save the results . Then set the Polarization and Mode . Press START to search .





# Basic Operation

## 1. Information

It shows the information of the channel which you watch in current. For more information, press the INFO button.

**Note:** First, press the INFO button, the PF band is showed, you can see the now and next program information. Second, when the PF band is showed, press the INFO button again, you can the detail information of the current program.



## 2. Changing Channels

To change channel, you have the following options:

Press the numeric buttons 1~9 on the Remote Control Unit.

Press the ▲▼ buttons.

To change between TV/Radio channels, press the TV/Radio button.

To select the previous channel, press the RECALL button.

## 3. Service List

To enter the Service List menu, press the OK button.



Press red button to see the information of services by group.

Press green button to see the detail information of the focused channel.

Press yellow button to sort the channels.



#### 4. Volume Control /Mute

To adjust the volume level, press the VOL Up/Down buttons.

To temporarily cut off the sound, press the Mute button.

To cancel mute, press the Mute button again or VOL Up/Down buttons.



#### 5. Soundtrack

When you want to change the Audio Language of current channel, press the AUDIO button. The on-screen menu is displayed in center of the screen as follows:

To change the audio languages: Select Audio Language option, use ◀▶ button to select the Audio language.

To change the audio tracks: Select Audio Track option, use ◀▶ button to select the audio track (Stereo/Left/Right).



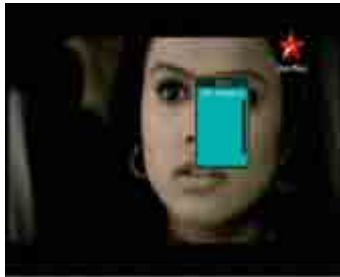
#### 6. Subtitle

When there are subtitles provided in the current program, press the SUB button to show the subtitle list. And press the ▲, ▼ button to select a subtitle, and then press OK button to confirm.



## 7. Teletext

When there are teletexts provided in the current program, press the TXT button to show the teletext list. And press the ▲ , ▼ button to select a teletext, and then press OK button to confirm.



## 8. Program Guide

Your STB has an Electronic Program Guide (EPG) to help you navigate programs through all the possible viewing options. The EPG supplies information such as program listings and starting and ending time for all available programs.

Press EPG button on Remote Control Unit. Then the Program Guide screen will be displayed.

Press red button to switch groups. When you selected an event that has extended explanation, you can see detail information of the program by pressing blue button. Press yellow button to switch Area.



Press OK button to book the selected event, and cancel the book operation by Press OK button again on the same channel.



Press blue button to record the selected event, and cancel the record operation by press blue button again.



One minute before the selected event starts, a notice will show on the screen. And you can choose to watch and record the program or not.



Press green button to see Timer Overview list.

## 9 Timer Overview

a. Press Red button to switch the channel's status between booked and unbooked.



Press Green button to cancel all.  
Press Yellow button to edit the timer selected.



b. Press Blue button to add a new timer. You can choose play, record or sleep to define different operations.



Select one channel and play type. Then set the start and end time (later than current time). Press RED button to commit. It will turn to play the channel selected when the start time comes.



Insert the disk first. Select one channel and record type. Set the start time and end time (later than current time). Commit and then it will turn to record the channel selected when the start time comes.



Select one channel and sleep status. Set the start time(end time has no use). Commit and then it will turn to sleep until you turn it on .



#### **NOTE:**

(1) You can choose Once、Daily or Weekly to define different work frequency for the timer.

(2) Please select famous brand USB 2.0 USB HDD or USB stick for Recording and Timeshift, such as SAMSUNG, HITACHI and SONY. Some USB devices maybe can't be supported due to its compatibility, And Please set the file system as FAT32, NTFS not supported yet.

(3) When the start time comes and the STB is in standby state, it will recover to play or record. Then when the end times comes, it will turn to standby state again.

#### **10. Time-Shift**

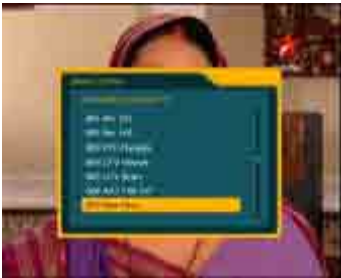
Press the PAUSE button to pause the picture in current and start Time-shift. Then press PAUSE to play, and press PAUSE again to pause. To return to the normal play status, press the STOP button.



## 11.PVR

Press the REC button to select a program among the service list of the current TP to start record.

**Note:** If it is no signal, you cannot use this function.



During the period of the record, you only can press the OK、UP or DOWN to change another program among the service list of the current TP to watch. If you want to watch a program in another TP, you should stop the record firstly.

Press the STOP or Exit button to stop record.



**Note:** the recording time must be more than 30 seconds. Otherwise, the record file cannot be saved.

## 12.USB

On the screen, press APPL to go to Playback, MP3 or Picture file lists on the disk and then press OK to play.

◆ Select Playback to watch the recorded program.



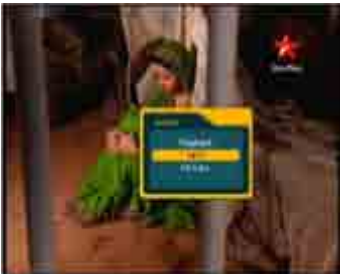
Press FF to fast forward and REW to review.



Go To button to go to the specific time or Press EXIT button to stop playing .



◆ Select MP3 to play the music.



Press OK to play one song and green/yellow button to select pre or next one.

Press Blue button to stop.





◆ Select Picture to play the pictures .



Press OK to play one picture. Use ◀▶ button to select pre or next one and Exit to return .



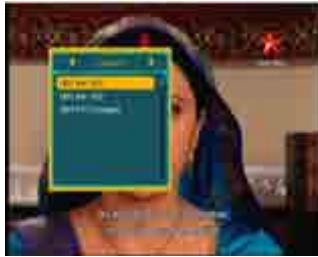
◆ Press RED button to see the information about the disk, GREEN button to see the information about the recorded program, YELLOW button to delete and BLUE to stop.





### 13. Favorite Channels List

On the screen, press **FAV** button to see the favorite channels list. Press ◀▶ to switch favorite groups, and press ▲▼ to select a service.



### 14. Satellite Group

On the screen, press **SAT** button to see the Satellite list (only show satellites in which there were programs). Press ▲▼ to switch Satellite groups, and press OK to select a service. And then the service list of the satellite group selected is showed.



# Main Menu

Press Menu button of the Remote Control Unit.

- ◆ You can move into the desired sub menu using ▲▼ buttons.
- ◆ You should input the PIN code in order to move into the corresponding sub-menu, such as **Installation**, **Channels**, **Personalization**, **Preferences** and **Extra**.
- ◆ Press MENU button to return to previous menu.
- ◆ Press OK button to confirm your selection/operation.
- ◆ Press EXIT button to exit Main Menu.

## Main menu shows the following information

- ◆ **Installation:** To search the channels, including Manual Installation , Blind Scan and Installation Dish.
- ◆ **Channels:** To manage the channels, including Organize Services, Organize Favorites, Factory Reset and Delete all Data.
- ◆ **Personalization:** the personalization setting, including Menu transparency, Banner display time and so on.
- ◆ **Preferences:** To set the parameter, including Language, Parental control, Time setting and Video Control.
- ◆ **Extra:** the extra function, including CA Status, Email, System Information, Calendar, Games and Converter.

## 1. Installation



### NOTE:

In this area we use this satellite data to receive programmes:

**Satellite:Asiasat 4 ku.**

**Angle of the dish-290 degrees.**

**Frequency-12360/12361.**

**Symbol rate-9404.**

**Polarisation-vertical.**

### 1.1 Manual Installation

To search the channels, for detail, refer to Channel Search.

### 1.2 Blind Scan

To search the channels, for detail, refer to Channel Search.

### 1.3 Installation Dish

To search the channels, for detail, refer to Channel Search.

## 2. Channels



### 2.1 Organize Services

There are two lists in this menu. Press ◀▶ button can switch between them.



In the **Services** list, there are three ways to select which channels to operate:

- ◆ Press the RED button to choose the group (complete/satellite/favorite/provider/CAS).



- ◆ Press ▲▼ button to choose one channel of the current group.



◆ Press the green button into the sub-menu **Option** to select/unselect some channels.



In the **Operations** list, you can press  $\blacktriangle\blacktriangledown$  button to select the operation that the yellow button stands for.

**Move:** Select **Move** in the **Operation** list, and then switch to the **Services** list. There are two ways to move.

**1).For single channel:**

Press  $\blacktriangle\blacktriangledown$  button to move the focused cursor on the channel which you want to move.



Then press the yellow button (Apply) to enable the **Move** operation. And then press  $\blacktriangle\blacktriangledown$  button to move the selected channels up/down in the **Service** list.



Press yellow button again to exit the **Move** operation before any other action.



**2). For above one channel:**

Press OK button to select some channels



Press the yellow button to enable the Move operation and Press ▲▼ button to move them up/down in the **Service** list



Press yellow button again to exit the **Move** operation and unselect the channels.



**Lock:** Select **Lock** in the **operation** list, and then switch to the **Service** list. There are two ways to lock.

1). For single channel: Press ▲▼ button to move the focused cursor on the channel which you want to lock. Then press the yellow button (Apply) to lock the selected channel. Taking the same operation again can unlock the locked channels.

2). For above one channel: Press OK button to select some channels, and press the yellow button (Apply) to lock the selected channels. Taking the same operation again can unlock the locked channels.



**Delete:** Select **Delete** in the **operation** list, and then switch to the **Service** list. There are two ways to delete.

1). For single channel: Press ▲▼ button to move the focused cursor on the channel which you want to delete. Then press the yellow button (Operate) to delete the selected channel. Taking the same operation again can cancel the operation.

2). For above one channel: Press OK button to select some channels, and press the yellow button (Operate) to delete the selected channels. Taking the same operation again can cancel the operation.



If you enter other menu or select other group after doing any operation, there will be a box to confirm your operation. Clicking Yes button will save the information into your STB.



## 2.2 Organize Favorites

There are three lists in this menu: **Type**, **Total Channel** and **Fav Channel**. Press ◀▶ button can switch the list.

In the **Type** list, there are five Fav groups, you can press ▲▼ button to choose a favorite group to operate.



In the **Total Channel** list, there are two ways to select which channels to operate:

Press the red button to choose the group (complete /favorite /provider/CAS).



Press ▲▼ button to choose one channel of the current group.

Press OK button and the channel you selected will be added to the **Fav Channel** list of the current favorite group, and the red icon will be showed in the left side of the selected channel.



In the **Fav Channel** list, you can press ▲▼ button to select which channel of the current favorite group to operate. Press OK button to remove the channel back to the **Total Channel** list.





◆ Press the exit button to exit the operation and choose YES or NO to save the change



### 2.3 Factory Reset

Change data to default setting. If you press OK button, the Password box will show on. And if you input the right password, the operation will be finished.



### 2.4 Delete all Data

Delete all TV and Radio channels here. If you press OK button, the Password box will show on. And if you input the right password, the operation will be finished.



### 3. Personalization



#### 3.1 Screen Saver mode

It is always **ON** and can't be changed.

#### 3.2 Menu transparency

Press ◀▶ button to set the transparency of the menu interface (0 /25% /50% /75%) here.

#### 3.3 Channel switch mode

It is always **Black** and can't be changed.

#### 3.4 Show on display

Press ◀▶ button to set the display mode on the front panel (Channel No./Time) here.

#### 3.5 Banner display time

Press ◀▶ button to set the time of the banner displays on the screen (5/8/10 seconds) here.

#### 3.6 Show startup logo

Press ◀▶ button to switch **Show startup logo**, if it is **Yes**, the logo will display when STB startups, but **No** not.

#### 3.7 Time-shift Always

Press ◀▶ button to switch **Time-shift Always**, if it is **Yes**, Time-shift feature will always be opened, but **No** not.

#### 3.8 Channel Show Mode

Press ◀▶ button to switch Channel Show Mode , to show channels through Channel No. or Service ID .

### 4 Preference



## 4.1 Language

In this menu, you can set the **Menu Language**, **Audio Language 0**, **Audio Language 1**, **Audio Language 2**, **Audio Priority mode**(Language /Dolby), **EPG Language**, **Subtitle Display mode** (**Always /Start Manually**), **Show subtitle mode** (**My Language/All**),and **Subtitle Language**.



## 4.2 Parental control

You need to input you PIN when you enter this menu.

**TIP: The PIN is set at the factory is 0000.**



**Parental Lock:** Press ◀▶ button to switch the **Parental Lock**. If it is **ON**, you need to input your PIN when you enter the menu **Installation and channel**; If it is **ON** and a channel is locked, you need to input your PIN when you play the channel, or if it is **OFF**, you can play any channel without inputting your PIN, regardless of whether the channel is locked or not.

**Allow Time Control:** Press ◀▶ button to **Disable** or **Enable** the **Allow Time Control** function. When it is **Enable**, you can press the numeric buttons to set the **Allow time**, only during the time you set in a day can the STB play TV , while other time it don't allow to play TV (Need to input PIN).

**Change Password:** Press the numeric buttons to input the old password at the **Current Password** table. And then input the new password at the **New Password** table. Finally, input the new password again at the **Confirm Password** table. If the two new passwords are in the same, it is succeed to change password.

## 4.3 Time Setting

If the **Allow Time Control** is **Enable**, you need to input your PIN when you enter **Time Setting**.



### 4.3.1 Local Time

**GMT Control:** Press ◀▶ button to change GMT Control status.

**GMT Offset:** Press ◀▶ button to change GMT offset.

**Summer Time:** Press ◀▶ button to switch Summer Time status.



### 4.3.2 TimerOverview

Press Red button to switch the channel's status between booked and unbooked. Press Green button to cancel all and Yellow button to book all.



Press Blue button to add a new timer.



**Channel:** Press ◀▶ button to switch between the channels.

**Timer Type:** Press ◀▶ button to switch the new timer type from Play, Record or Sleep.

**Start Date:** Press number button to input the start date.

**Start Time:** Press number button to input the start time.

**End Date:** Press number button to input the end date.

**End Time:** Press number button to input the end time.

**Timer Event:** Press ◀▶ button to select the timer event.

#### 4.4 Video Control

◆ **TV-SCART:** Press ◀▶ button to set the video output mode (**CVBS /RGB /CVBS + YPbPr**).

◆ **Screen Ration:** Press ◀▶ button to set the screen ration (**4:3 /16:9**).

When connecting a 4:3 TV, switch it to **4:3**.

When connecting a 16:9 TV, switch it to **16:9**.

◆ **Aspect Ration:** Press◀▶button to set the aspect ration (**Letter/Pillar Box/Pan Scan / Auto**).

◆ **HDMI Resolution:** Press ◀▶ button to set the aspect Resolution (**1080i / 720p / 576p/ 576i/ 480p/480i/Auto**).

◆ **CVBS System:** Press ◀▶ button to set the Television System (**PAL\_BDGIH / PAL\_N/PAL\_NC/PAL\_M/NTSC\_J/NTSC\_USA /SECAM**).



#### 5. Extra



#### 5.1 CA Status

There are three items in the CA Status menu, including Smart Card Status, SoftCell Service Status and Loader Status.



◆ Smart Card Status

Enter this menu and it shows the information of the Smart Card.



◆ SoftCell Service Status

Enter this menu and it shows the list of the DVB Client Services.



Press ▲▼ button to choose one service description of the current list and then press OK button to check the detail of the service selected.



◆ Loader Status

Enter this menu and it shows the information of Irdeto Load Status and Manufacturer Load Status.



5.2 Email

There is the **Email** list in this menu.

Press ▲▼ button to choose one E-mail of the current list.



◆ Press OK button to check the content of the Email selected.



◆ Press the RED button to delete the Email selected.

◆ Press the RED button again to cancel the **Del** operation of the Email selected.



- ◆ Press the GREEN button to delete all Emails in the list.



### 5.3 System Information

Enter this menu and it shows the software version, hardware information, last update date of your STB on the screen.



### 5.4 Calendar

You can press ▲▼ button to change the year , and press ◀▶ button to change the month.



### 5.5 Games

There are three entertaining games on your STB, containing Snake, Five Chess, Box Man.







## 5.6 Software Upgrade

## 5.7 Converter

They are the Length, Temperature, Weight and Currency tables.



## TROUBLESHOOTING

Problem	Possible Cause	What to do
How to connect a decoder to the TV		(1) Connect one end of the AV leads in the AV output at the back of the decoder and the other end to the AV input on the television (2) Connect the satellite cable from the wall in the LNB In input of the decoder (3) Plug in the power cable
No TV channel displaying on the screen		(1) Decoder settings have to be entered and tuned (2) Manual search (3) Antenna set up
Blue screen with no sound	Either the decoder is off or you are on the wrong tv channel	Check that all leads and cables are connected properly
No sound, only picture	(1) Program is muted (2) AV cable is loose (3) Some problem with local channel	(1) Check if the mute button is pressed (2) Increase the volume from the remote to the maximum (3) Check if the other local channels have sound (4) Check the AV Leads
Radio sound coming and no picture	It has gone on to the radio mode	Press the TV button on your remote and the service will start working
The STB gets stuck		Reboot the decoder by turning off the black button at the back of the decoder for 90sec and turning it back on
Not able to change channels	(1) The batteries in your remote control need replacing (2) The STB gets stuck	See if you are able to change channel from the decoder -If yes, then change the remote batteries and it should work -If no, reboot the decoder
No signal		Check the cable from the wall plate to the LNB In input of the decoder. If u have a pot plant set up check if the two cable are connected in the door way.

## Technical Specification

<b>MPEG Transport Stream A/V Decoding</b>	
Video Decoding	MPEG-2: MP@ML, MP@HL MPEG-4: ASP@L5 w/o QMC, GMC H.264/AVC: HP@L4.0, MP@L4.0, 3.2 VC-1: AP@L3, AP@L2
Aspect Ratio	4:3 16:9 , Letter/Pillar box, Pan scan, Auto
Video Resolution	480i/480P /576i/576P/720P /1080i/1080P
Audio Decoding	MPEG-1 and -2, layer 1 and 2 MPEG-4 HE-AAC V1L1, L2, V2 L2/L4
Audio Mode Single	Channel/Dual Channel Joint stereo/Stereo
Sampling Rate	32,44.1 and 48KHz
<b>Power Supply</b>	
Input Voltage	100 to 240 VAC, 50Hz/60Hz
Type	SMPS
Power Consumption	Max . 20W
Protection	Separate internal fuse
<b>Tuner &amp; Channel</b>	
Input Connector	F-Type , IEC 169-24, Female
Frequency Range	950MHz to 2150MHz
Input impedance	75 unbalanced
Signal Level	-70to -15dBm
Demodulation	QPSK/8PSK/16APSK/32APSK
<b>A/V &amp; Data In/Out</b>	
RCA Component	YPbPr up to 1920x1080
RCA /Cinch	Video Output (CVBS) Audio R/L (volume &Mute control)
S/PDIF	Optical Digital audio or Dolby AC-3 Bitstream output
USB	2.0 HighSpeed
HDMI	HDMI 1.3
<b>Physical Specification</b>	
Size ( W x H x D)	240 x 185 x 45mm(Receiver)
Weight(net)	About 1.04kg
<b>Memory</b>	
Flash Memory	8Mbyte
SDRAM	256Mbyte

